

# Adaptive Streaming Monitor

Solution to monitor QoE and QoS of HLS streams and receive alerts if problems are detected.

## Product information

### Product

- Software
- Hardware <sup>(1)</sup>

### Video quality metrics

- No reference
- Decodability
- Parametric <sup>(2)</sup>
- Hybrid <sup>(2)</sup>

### Audio quality metrics

- No reference
- Decodability
- Loudness (according to recommendations ITU BS 1770-2 and EBU R128) <sup>(2)</sup>

### Input types

- Files
- HLS streams
- Capture card/device <sup>(2)</sup>
- Desktop capture <sup>(2)</sup>

### Input formats

- HEVC (H.265)
- MPEG-4/AVC (H.264)
- MPEG-2
- Other encoded formats

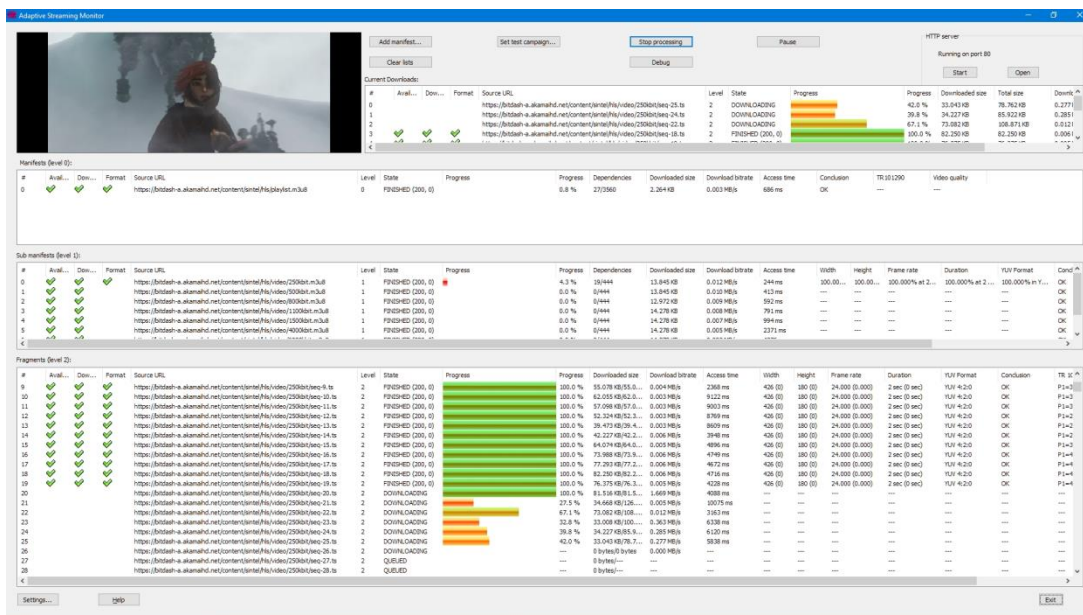
### Applications

- HLS files monitoring <sup>(2)</sup>
- Quality monitoring <sup>(2)</sup>
- Jerkiness monitoring <sup>(2)</sup>

<sup>(1)</sup> Hardware (PC) may be supplied as an option

<sup>(2)</sup> For video monitoring, also see our other products like Video Quality Monitor

**Ask for a free evaluation version now!**



Modern video streaming relies on adaptive streaming, and especially on HLS (HTTP Live Streaming).

To permit the monitoring the QoE (Quality of Experience) and QoS (Quality of Service) of multiple HLS streams, Adaptive Streaming Monitor is here.

Adaptive Streaming Monitor is a powerful software solution to measure and monitor the presence of all the video segments of an HLS stream, but also their characteristics (resolution, frame rate, duration, YUV format), their TR 101 290 errors and, last but not the least, video quality.

Adaptive Streaming Monitor computes video quality using a MOS (Mean Opinion Score) scale ranging from 0 to 100, using the same video quality metrics as Video Quality Monitor.

Adaptive Streaming Monitor is a very useful tool to:

- check the presence of all the segments of HLS streams
- measure the video quality (MOS) of every segment
- measure the audio quality (MOS) of every segment
- measure TR 101 290 errors on HLS streams
- check the stability of resolution, frame rate, duration and YUV format on all the segment of any profile
- receive alerts if problems are detected

Adaptive Streaming Monitor quickly provides accurate, detailed and repeatable measurements.

Adaptive Streaming Monitor's **No Reference metrics** compute video quality scores by exploring the decoded frames at pixel level..

Each metric computes codec-specific artifacts:

- The **No Reference MPEG-2 metric** measures blockiness visibility and blur perception,
- The **No Reference H.264 metric** measures blockiness visibility, blur perception and objects contrast,
- The **No Reference HEVC metric** measures blur perception and picture flatness,

Adaptive Streaming Monitor also computes audio quality scores.

And since Adaptive Streaming Monitor does not depend on specific hardware, you can install it on any Windows™ PC. You can even run it on a laptop!

Evaluate Adaptive Streaming Monitor today!

Evaluation is free!

Take the lead in the race for quality